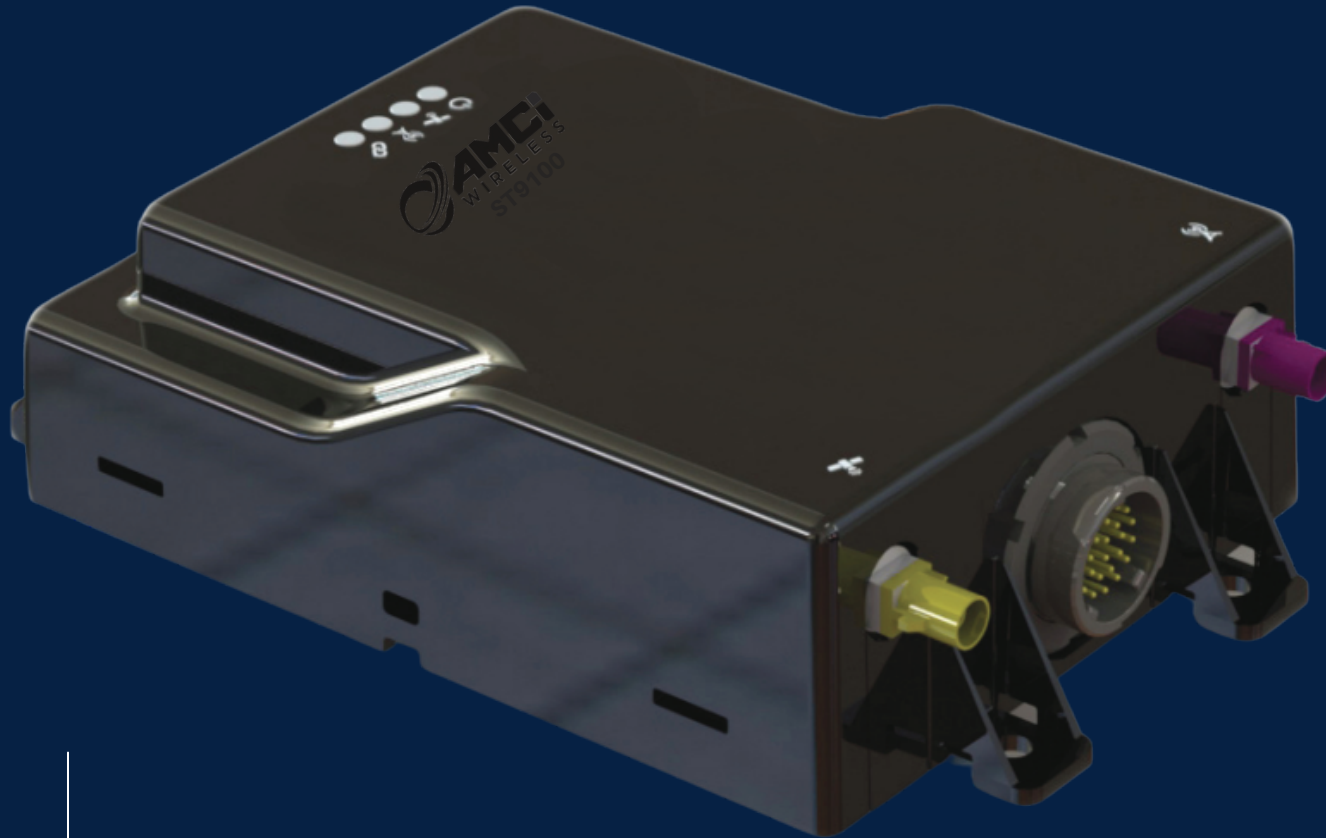


Weatherproof



Dual Cellular/Satellite
Communications

Monitor & Control



ST9100 - DUAL MODEM

A versatile, duplex, programmable, dual-mode terminal supporting simultaneous cellular and satellite connections. Cost effectively monitor and control remote assets with multi-network connectivity. This platform is ideal for controlling fixed and portable assets.



INT +1 346 701 5711



www.amci-wireless.com



255 Pennbriht Drive, Suite 240
Houston, TX 77090 **OR**
2171 S Trenton Way, Suite 217,
Denver, CO 80231



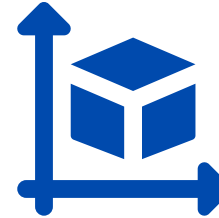
salesmgmt@amci-wireless.com

INFORMATION

**DUAL MODE
CELLULAR/SATELLITE
COMMUNICATION**



- Serial
- Digital
- Analog



- 148 x 113 x 47 mm
- 181 x 113 x 47 mm
Including mounting feet
- 13.9 lbs. (6.3 kg)

GPS TRACKING

**EXPANDIBLE I/O
CHANNELS: DIGITAL
OR ANALOG**



- Time of day based reporting schedule
- Modbus RTU: configurable demands



- CE (R&TTE, RoHS 2), FCC/IC, PTCRB, Inmarsat type approval, ACMA, ICASA,
- Anatel, ITF, IEC 60945

**MONITORING &
CONTROL**

**RECHARGABLE
BACKUP BATTERY**



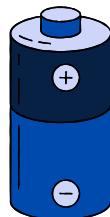
- 2.5m accuracy
- Tracking
- Acquisition time: 1-27 seconds.



- 3 year warranty (36 months)

**RS485 & RS232
MODBUS-RTU SERIAL
PORTS**

**MULTI CARRIER
SUPPORT**



- Discharge temperature range: -20°C to +75°C
- Input voltage: 9 to 32VDC



- Tech support available 24/7

**WIRELESS1440
iPHONE & ANDROID
APP**